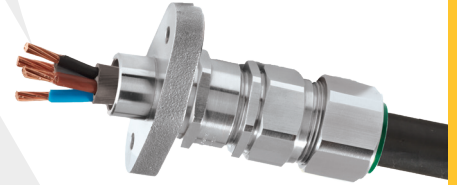


E1FW/MF

E1FW/MF MINING, INTERNATIONALLY APPROVED, FLANGED EXPLOSIVE ATMOSPHERE CABLE GLAND

FOR ALL TYPES STEEL & ALUMINIUM WIRE ARMoured CABLES

- High quality durable materials
- Wide sealing range for each cable gland size
- Fully sequential, three step installation procedure
- Reduces subjectivity of installations
- Complete with flanged adaptor
- Metal-to-metal armour clamping
- Direct & remote installation
- Displacement type flameproof inner seal
- Controlled outer 'load retention' seal
- Unique OSTG prevents overtightening
- -60°C to +130°C
- Internationally marked, UKEX, IECEx & ATEX
- Superior EMC performance



IP66

EMC +130°C
↑
-60°C

Ex db

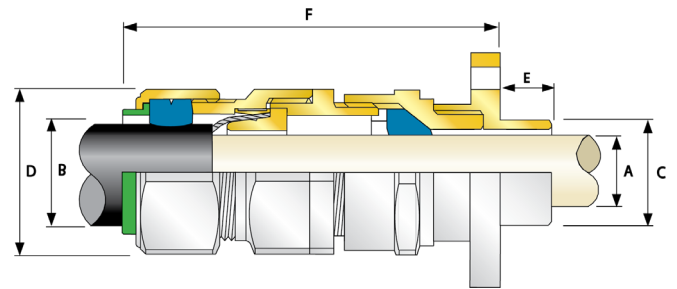
TECHNICAL CLASSIFICATION

DESIGN SPECIFICATION	BS 6121:Part 1:1989, IEC 62444, EN 62444
MECHANICAL CLASSIFICATION*	Impact = Level 8, Cable Anchorage = Class D
ENCLOSURE PROTECTION	IK10 to IEC 62262 (20 joules) Brass & Stainless Steel only
ELECTRICAL CLASSIFICATIONS*	Category B
INGRESS PROTECTION RATING**	IP66
CABLE TYPE	Single Wire Armour (SWA), Aluminium Wire Armour (AWA)
SEAL MATERIAL	CMP SOLO LSF Halogen Free Thermoset Elastomer
SEALING TECHNIQUE	CMP Inner Displacement Seal & Unique CMP 'LRS' TM Outer Load Retention Seal
SEALING AREA(S)	Cable Inner Bedding & Outer Cable Sheath
CABLE GLAND MATERIAL	Brass, Electroless Nickel Plated Brass
ARMOUR CLAMPING	Detachable Armour Cone & AnyWay Universal Clamping Ring

* Mechanical & Electrical Classifications applied as per IEC 62444 & EN 62444. ** When CMP installation accessories are used. Refer to www.cmp-products.com for further information. See MA/FT, MA/B page for flange mounting dimensions. Alternative flange sizes available upon request.

GLOBAL PRODUCT CERTIFICATION

ATEX CERTIFICATE	CML18ATEX1325X, CML18ATEX1332U	IECEx CERTIFICATE	IECEx CML 18.0182X, IECEx CML 18.0189U
UKEX CERTIFICATE	CML 21UKEX1252X, CML 21UKEX1255U	CODE OF PROTECTION	Ex db I Mb
CODE OF PROTECTION	⊕ I M2 Ex db I Mb	COMPLIANCE STANDARDS	IEC 60079-0,1
COMPLIANCE STANDARDS	EN60079-0,1	COMPLIANCE STANDARDS	IEC 60079-0,1



COMBINED ORDERING REFERENCE (*BRASS METRIC)			MINIMUM SPIGOT LENGTH 'E'	SPIGOT DIAMETER 'C'	CABLE BEDDING DIAMETER 'A'		OVERALL CABLE DIAMETER 'B'		ARMOUR RANGE		ACROSS FLATS 'D'	ACROSS CORNERS 'D'	PROTRUSION LENGTH 'F'	CABLE GLAND WEIGHT (Kgs)
SIZE	TYPE	ORDERING SUFFIX			MIN	MAX	MIN	MAX	MIN	MAX	MAX	MAX		
20S	E1FW	1RA/MF	15.0	19.0	6.1	11.6	9.5	15.9	0.8	1.25	24.0	26.4	89.5	0.302
20	E1FW	1RA/MF	15.0	19.0	6.5	13.9	12.5	20.9	0.8	1.25	30.5	33.6	92.5	0.361
25S	E1FW	1RA/MF	15.0	25.4	11.1	19.9	14.0	22.0	1.25	1.6	37.5	41.3	109.6	0.575
25	E1FW	1RA/MF	15.0	25.4	11.1	19.9	18.2	26.2	1.25	1.6	37.5	41.3	109.6	0.572
32	E1FW	1RA/MF	15.0	31.8	17.0	26.2	23.7	33.9	1.6	2.0	46.0	50.6	107.2	0.745
40	E1FW	1RA/MF	15.0	38.1	22.0	32.1	27.9	40.4	1.6	2.0	55.0	60.5	111.2	1.015
50S	E1FW	1RA/MF	15.0	50.8	29.5	38.1	35.2	46.7	2.0	2.5	60.0	66.0	109	1.478
50	E1FW	1RA/MF	15.0	50.8	35.6	44.0	40.4	53.0	2.0	2.5	70.1	77.1	113	1.683
63S	E1FW	1RA/MF	15.0	63.5	40.1	49.9	45.6	59.4	2.0	2.5	75.0	82.5	120.5	2.109
63	E1FW	1RA/MF	15.0	63.5	47.2	55.9	54.6	65.8	2.0	2.5	80.0	88.0	122.5	2.149
75S	E1FW	1RA/MF	15.0	76.2	52.8	61.9	59.0	72.0	2.5	3.0	89.0	97.9	142.5	3.664
75	E1FW	1RA/MF	15.0	76.2	59.1	67.9	66.7	78.4	2.5	3.0	99.0	108.9	144.5	3.978

* For material options add the following suffix to the ordering reference; Brass (no suffix required); Nickel Plated Brass '5'; 316 Grade Stainless Steel '4'; Copper Free Aluminium '1'

Examples: 32E1FW1RA/MF = Brass, 50SE1FW1RA/MF5 = Nickel Plated Brass, 25E1FW1RA/MF4 = Stainless Steel

Dimensions are displayed in millimetres unless otherwise stated